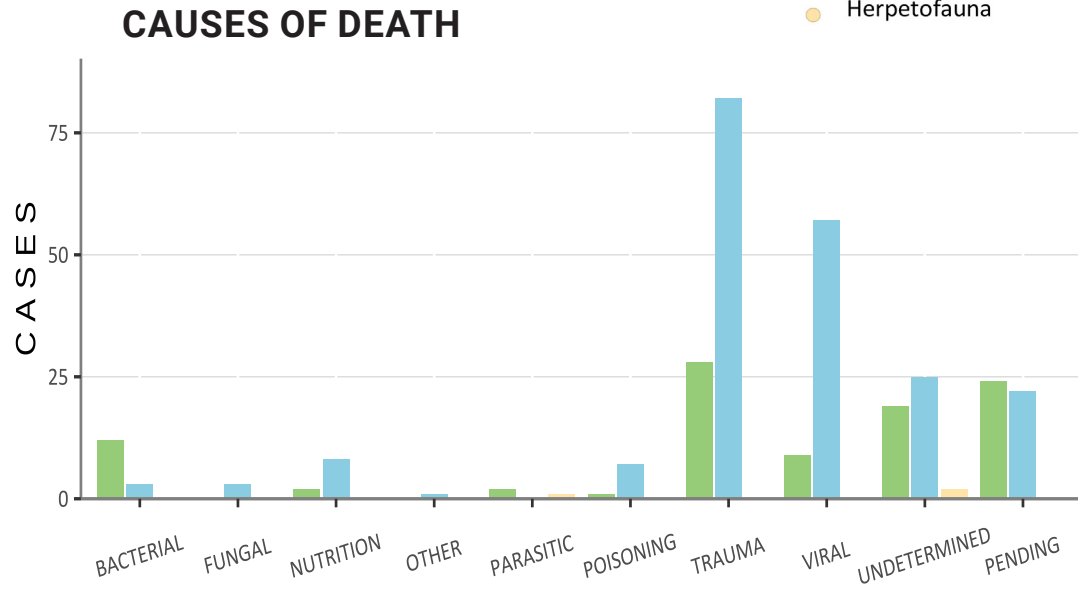
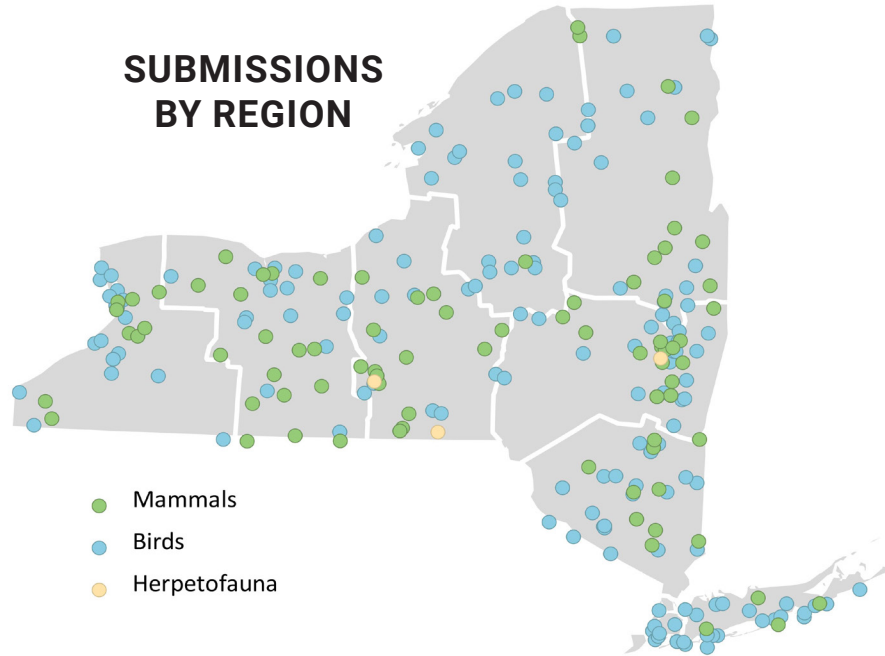




110
deaths by trauma
82 birds* &
28 mammals
*16 peregrine falcons



354 Total submissions

26 Rabies tests
0 Positive

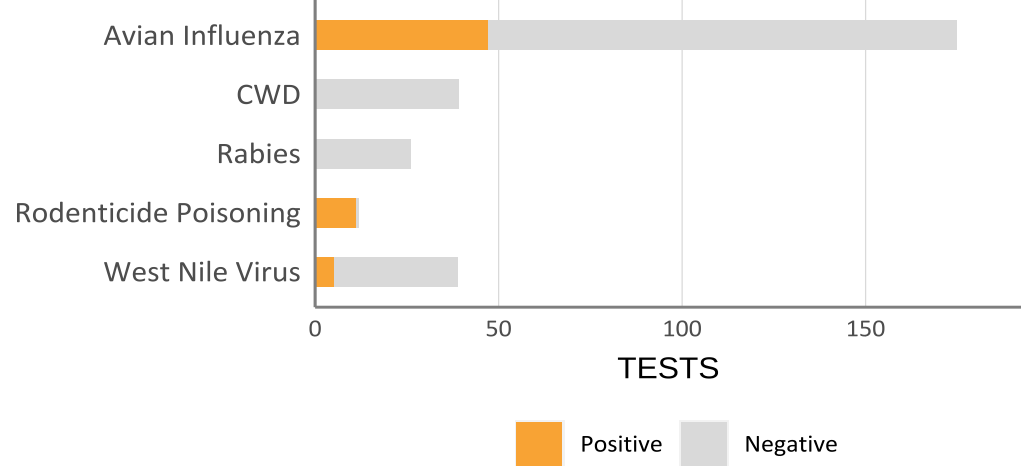
174 HPAI tests
47 Positive

42 Bird species
242 submissions

3 Herp species
3 submissions

18 Mammal species
109 submissions

TARGETED HEALTH SURVEILLANCE





Welcome Aboard - New Wildlife Veterinarians!

Dr. Therese McNamee joined the WHU team as a Research Scientist. As a DVM with a background in public health and conservation medicine, Therese will concentrate on wildlife necropsy and disease diagnostics. One of her favorite wildlife experiences was in Honduras as a veterinary student. She had the opportunity to assist with the chemical immobilization and examination of a mountain lion.



Dr. Jenny Bloodgood joined the CWHL team as an Assistant Professor of Practice. As a DVM/PhD with a background in wildlife biology, marine mammals, and integrative conservation, Jenny will focus on wildlife disease surveillance and research, teaching and training, and policy support. One of Jenny's most interesting wildlife experiences involved a 34 ft (think school bus) sperm whale stranding in Mobile Bay, AL. As the veterinarian in charge, Jenny oversaw the stranding response and eventual euthanasia and necropsy of that animal.

Program *happenings* in the **field** and in the **lab**

New Projects Online

[Waterfowl Contaminant Study](#)

[SARS-CoV-2 & White-tailed Deer](#)

[Using Mathematical Models To Study Furbearer Populations](#)

New Disease Fact Sheet

[Avian Pox](#)

New Publications

[Occurrence of mange in American black bears \(*Ursus americanus*\) in New York State, USA.](#)

[Aquatic eDNA can advance monitoring of a small-bodied terrestrial salamander and amphibian pathogen](#)

Under the **scope...**



Chocolate Toxicity in Black Vultures

The importance of examining multiple specimens during mortality events came to the forefront during the HPAI outbreak. From September through October, the WHU received many wild black vultures from a local zoo, suspected die-offs from Avian Influenza. During necropsy, two specimens displayed interesting signs, most notable was a strong chocolate odor emanating from the crop contents.

Additional testing by the UC Davis Veterinary Clinical Diagnostic Lab determined both birds had elevated theobromine and caffeine levels in their livers, confirming chocolate toxicity as the cause of death.

Keeping **YOU** in the loop!

- Interested in getting the "WHP Weekly Case Reports"? Email us at cwhl@cornell.edu to get registered & keep up to date on all WHP cases! Access to the case reporting system is available to agency staff.
- Check out the latest WHP disease watch alerts, Wildlife 411, or Lab news impacting wildlife health at cwhl.vet.cornell.edu.

