

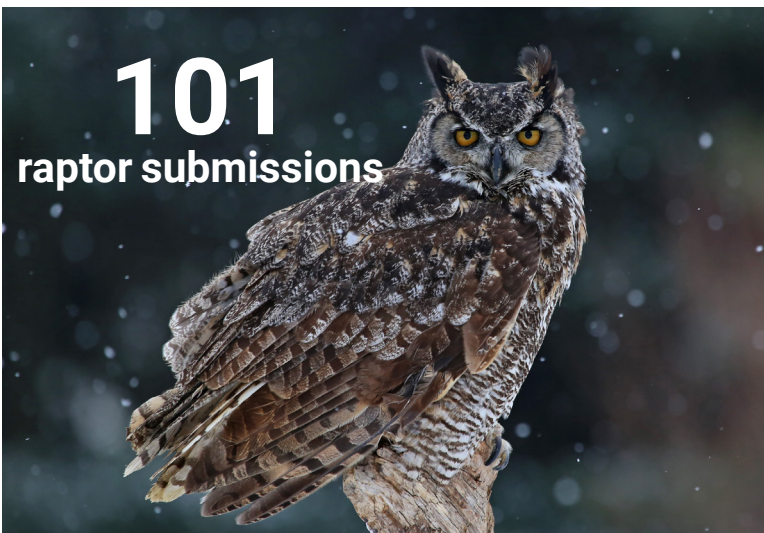
# New York State Wildlife Health Program (WHP)



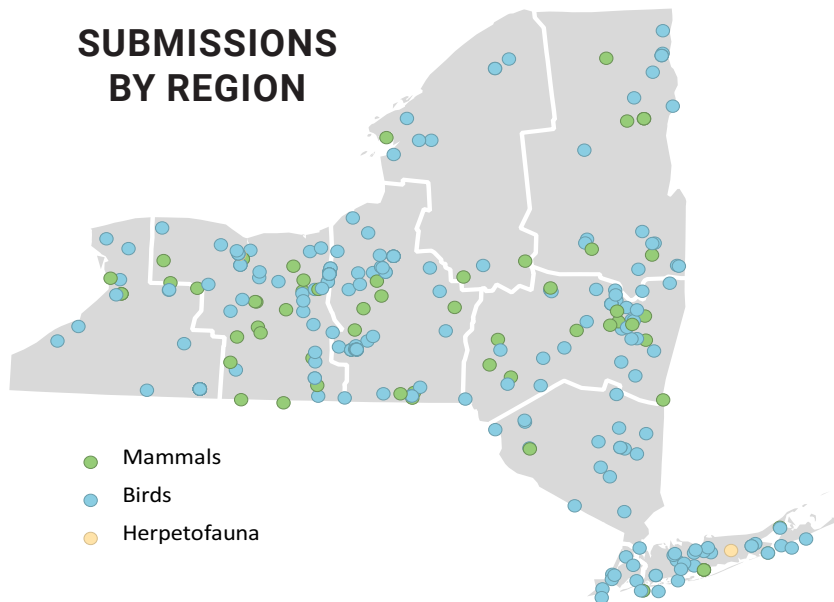
Department of  
Environmental  
Conservation

WHP QUARTERLY REPORT

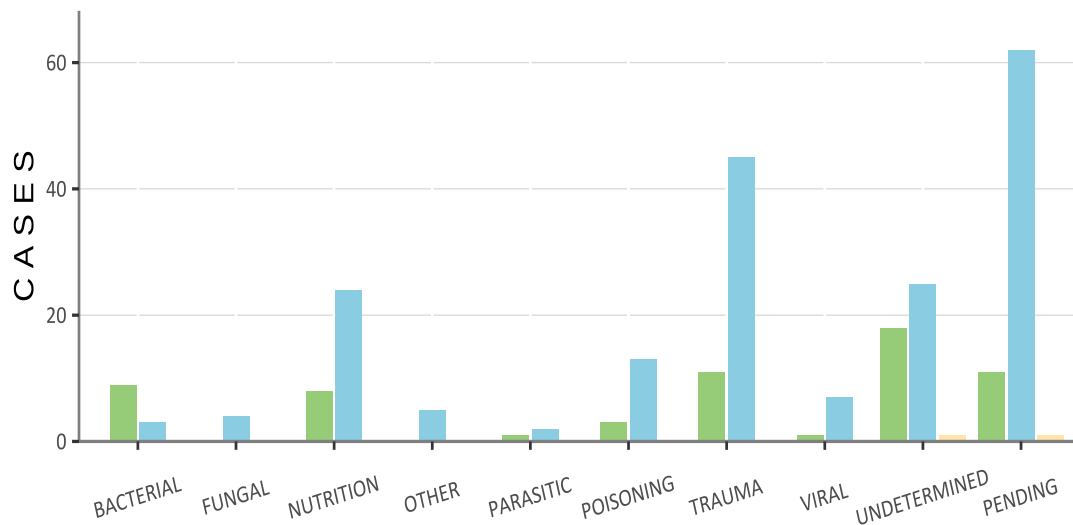
Q1 - 2022 (JAN-MAR)



## SUBMISSIONS BY REGION



## CAUSES OF DEATH



**284** Total submissions

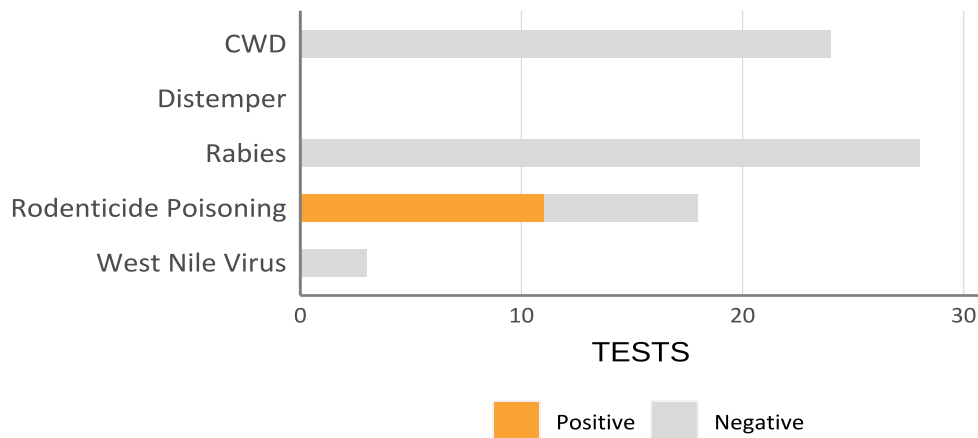
**22** Rabies tests  
0 Positive

**45** Bird species  
215 submissions

**2** Herp species  
2 submissions

**14** Mammal species  
66 submissions

## TARGETED HEALTH SURVEILLANCE





## 2022 Highly Pathogenic Avian Influenza (HPAI) Outbreak

In NY, HPAI H5N1 has been detected in shorebirds (sanderlings, great blue heron), waterfowl (snow geese, Canada geese, tundra swan, wood duck, redhead duck), raptors (snowy owl, great horned owl, bald eagles, Cooper's hawk, red-tailed hawk), a turkey vulture, and a fish crow.

The Wildlife Health Program issued a DEC press release to inform the public about the outbreak. We provided biosafety guidance to DEC field staff and collaborated with the Special License Unit to communicate to wildlife rehabilitators and domestic game bird breeders. We coordinated information with the NYS Dept. of Agriculture and Markets, Dept. of Health, and NYC Mental Health and Hygiene. We worked with affected wildlife rehab centers directly as well.

Because HPAI is a zoonotic disease, internal laboratory testing processes were adjusted, and all suspect-positive samples were sent to the USDA-National Veterinary Services Lab for confirmatory testing. We worked with USDA-Wildlife Services and Veterinary Services on the national reporting website: [2022 Detections of Highly Pathogenic Avian Influenza in Wild Birds](#)

### Program *happenings* in the *field* and in the *lab*

#### Publication update

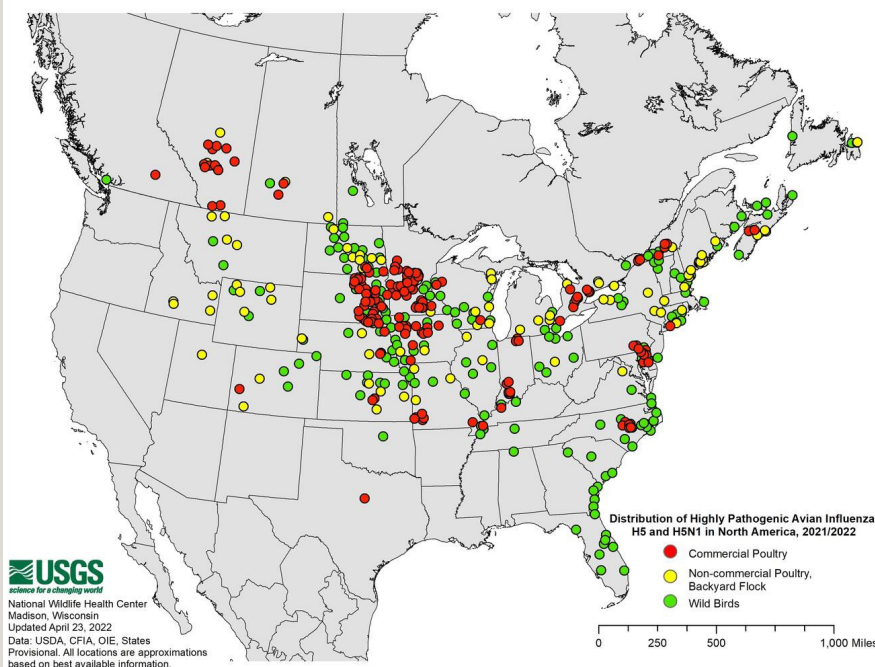
We published the NE regional study of lead toxicosis in bald eagles in early January. References to the article showed up in nearly 300 newspapers and news stations across the country and world.

[Environmental lead reduces the resilience of bald eagle populations](#)

#### Furbearer Modeling

We are working with furbearer biologists at the DEC, Vermont Fish & Wildlife Department, and the Maine Department of Inland Fisheries & Wildlife to conduct analyses of their harvest time series data from the past many decades.

HPAI distribution map from USGS National Wildlife Health Center through April 23, 2022



### Keeping **YOU** in the loop!

- Interested in getting the "WHP Weekly Case Reports"? Email us at [cwhl@cornell.edu](mailto:cwhl@cornell.edu) to get registered & keep up to date on all WHP cases! Access to the case reporting system is available to agency staff.
- Check out the latest WHP disease watch alerts, Wildlife 411, or Lab news impacting wildlife health at [cwhl.vet.cornell.edu](http://cwhl.vet.cornell.edu).

